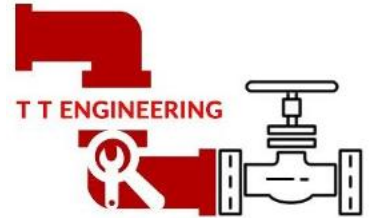


TT ENGINEERING
Valve Service & Gasket Solution



Valve Specialist





MACHINING
&
FABRICATION

VALVE

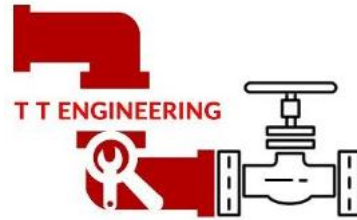
GASKET

- * Assemble Pump and Gearbox with Motor
- * Piping Fabrication Work
- * Vessel Fabrication Work
- * Structural Fabrication Work
- * Level Sensor Chambers

- * Safety Relief Valve.
- * Control valve.
- * On-off Valve.
- * Manual Valve.
- * Knife Gate Valve.
- * Valve Actuator.
- * Triple Offset Valve.

- * Flange Joint Gasket.
- * Cam Profile.
- * Valve & Pump Packing.
- * Compression Die formed Packing.
- * Borosilicate Gauge Glass.
- * Spiral Wound Gasket.
- * Graphite Gasket.





ABOUT US

TT ENGINEERING valve service & gasket solution offering valve repair, services and supply to the **Power Generation, Oil & Gas, Process, Chemical Plant & Marine Industries** in Bangladesh. We service all valves including control valves, safety relief valves, parallel slide gate valves and manual valves. Our size and flexibility enable us to deal with any customer need from a single emergency valve

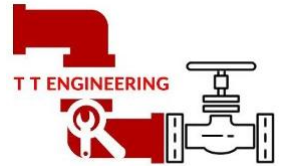
repair to a pre-planned full on-site overhaul. Driven by continuous improvement, we thrive on solving problems for our customers. We have successfully completed Overhaul servicing of **KSB 80"** Butterfly valve and **TY 60"** Gate valve in Overseas. We have experienced work on the In-situ domestic and international.

TT ENGINEERING now offers after sales support services and New Valve, gasket from world most top ten manufacture company throughout Bangladesh & Asia.

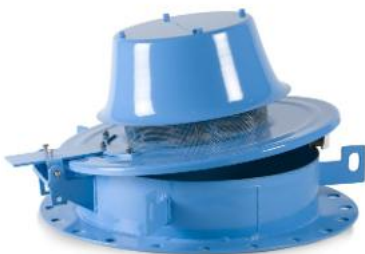
Our Mission is Simple

TT Engineering aims to be the first choice for all valve repair and refurbishment needs throughout the Bangladesh. Delivering this aim requires our people to focus on the customer, health and safety, innovative problem solving and class leading quality and delivery.

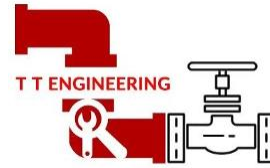
Safety Relief Valve



- ◆ Various brand of safety relief valve fully overhaul servicing, Inspection and testing under API527 standard.
- ◆ On-site Hydrotesting and Live testing during commissioning & servicing of Boiler.
- ◆ Pressure vacuum and Emergency Pressure Vacuum Relief Valve overhaul service and testing.
- ◆ Pressure reducing valve.
- ◆ Performed Electronic valve testing (EVT) and setting up the safety valve at Live line.
- ◆ Supply and consult OEM part's.
- ◆ Field Service.
- ◆ On-board service for vessel and marine industry.
- ◆ Provide service report after completion of the repair.
- ◆ Attached Service Tag.
- ◆ Database record keeping system for trace back the history for the next service.
- ◆ Sizing and Supply new valve.



Control Valve

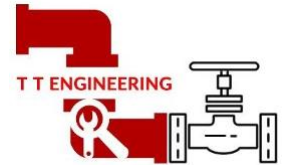


- ◆ Various brand of Control valve fully overhaul Servicing, Inspection and Testing.
- ◆ On-site Servicing and Calibration.
- ◆ Servicing of Level Gauge (Site Glass).
- ◆ On-board service for vessel and marine industry.
- ◆ Provide service report after completion of the repair.
- ◆ Provide valve analysis report.
- ◆ Attached Service Tag.
- ◆ Database record keeping system for trace back the history for the next service.
- ◆ Sizing and Supply new control valve.
- ◆ Testing Standard are used:

ISA-S75 / FCI 70-2 / API598 / 6D.



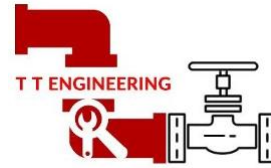
On-off Manual Valve



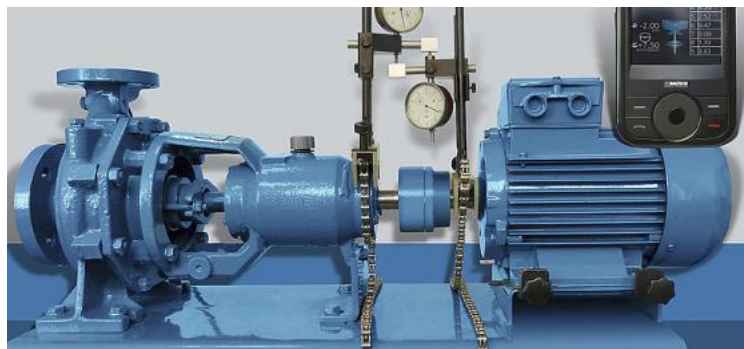
- ◆ Various brand & wide range of valve.....
Gate valve, Globe and with bellow seal valve, Non return Check valve. Ball valve, Butterfly valve, Knife gate valve, Triple offset butterfly valve, Plug valve.
High pressure seal valve.
Steam turbine protection valves Trip Throttle Valve.
- ◆ Repair On-site high pressure seal welded valves.
- ◆ Sizes of the valve servicing range from as small to as large.
- ◆ Quarter turn and Bevel gearbox Servicing.
- ◆ Actuator servicing.
- ◆ Gearbox & Actuator Assembly & Function Test.
- ◆ On-board service for vessel and marine industry.
- ◆ Provide service report after completion of the repair.
- ◆ Provide analysis report.
- ◆ Attached Service Tag.
- ◆ Database record keeping system for trace back the history for the next service.
- ◆ Sizing and Supply new Manual valve.
- ◆ Testing Standard are used:
API598, API6D, API611 and API612.
ASME / ANSI B16.34 and B16.5.
Media– Hydro with water / N2 and other as per customer requirement.



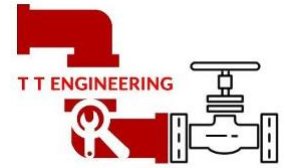
Machining & Fabrication



- ◆ Trim Modification.
- ◆ Machine Valve End Connection To RF, RTJ And BW.
- ◆ Alignment coupling Motor with Pump/Gearbox.
- ◆ Fabrication of pump and motor base plate.
- ◆ Fabricated and machine the Adapter & Bracket for Valve actuator.
- ◆ Piping fabrication work.
- ◆ Structural Fabrication Work.
- ◆ Fabricated of level sensor chambers
- ◆ By Pass & Drain Valve Servicing.
- ◆ Fabrication And Repair The Valve Components.
- ◆ NDT Dye Penetrant Test.
- ◆ Supply new hollow metal pipe any SCH and any sizes.
- ◆ Support Technical issue on the valve.

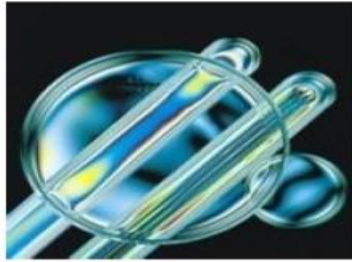


Gasket



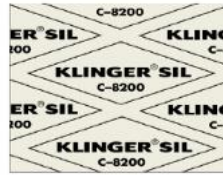
◆ We are authorised supplier of **KLINGER** product in Bangladesh.

Borosilicate Gauge Glasses



Circular Sight Glasses
moulded - ground - polished - thermally pre-stressed

KLINGERSIL® C-8200



KLINGERSIL® C-6327



KLINGERSIL® C-4500



KLINGER®top-graph 2000



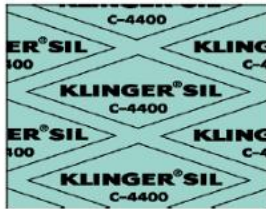
KLINGERSIL® C-4430



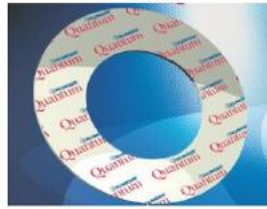
KLINGER®top-sil-ML1



KLINGERSIL® C-4400



KLINGER® Quantum



CAM PROFILE



RTJ



KLINGER®top-chem – PTFE gasketing

KLINGER® top-chem 2005



KLINGER® top-chem 2006



KLINGER® soft-chem



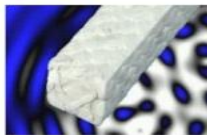
Style K35 Die formed rings



*Material:
Manufactured from exfoliated graphite*

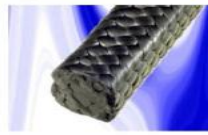
Compression Packing

Style K54F



*Material:
Virgin PTFE Yarn*

Style K55



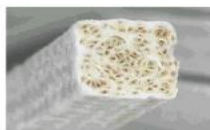
*Material:
Graphite encapsulated PTFE yarn*

Style 396



*Material:
A dense flexible graphite with*

Style 2000



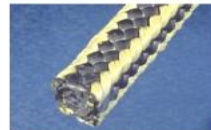
*Material:
Phenylene/Fibre X impregnated with PTFE dispersion.*

Style K3222 / K3222W



*Material:
Exfoliated graphite ribbon packing*

Style K4313

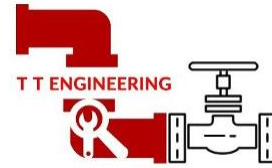


*Material:
A hybrid packing that combines Aramid fibre and Expanded graphite PTFE.*

SPIRAL WOUND



Major Brand

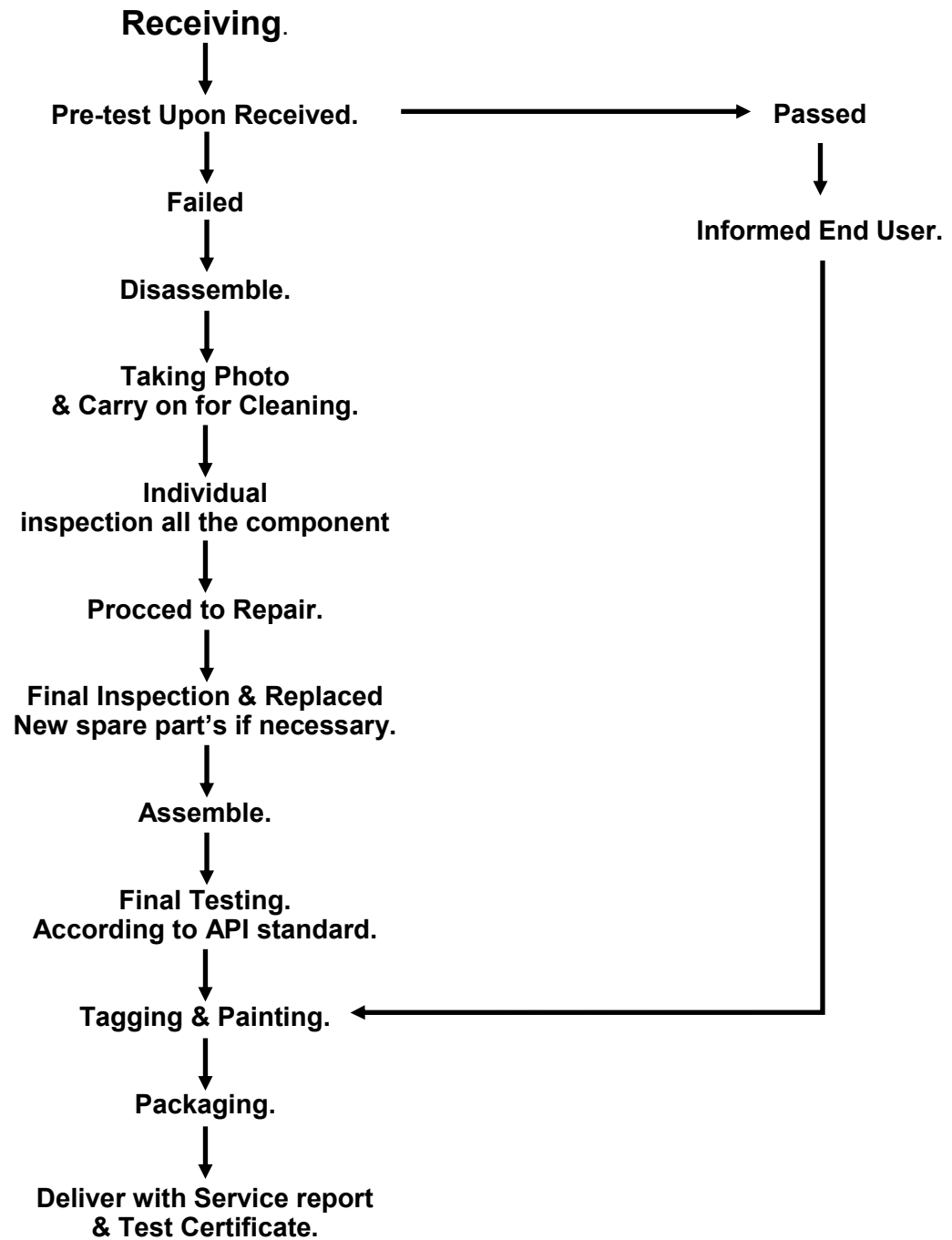
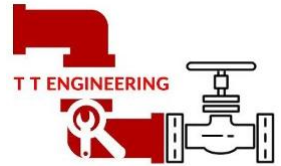


Brand of Valve Service

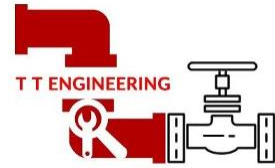


And More brands....

Processing of servicing



Performed Various Major Job



80" Butterfly Valve Overhaul Servicing .



60" Gate Valve Overhaul Servicing.



Please do not hesitate to contact us for any enquiry or information.

Consulting
Servicing
Support
Sales



TT ENGINEERING

Valve Service & Gasket Solution

162 Mustafa Plaza, 4th Floor,

Sheikh Mujib Rd, Agrabad,

Chattagram-4100, Bangladesh.

Tel: 8801714064093. 88031712642.

Email: info@ttvalvebd.com

Visit: www.ttvalvebd.com.